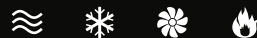




H V A C R M A S T E R D I S T R I B U T O R

CATALOG AT A GLANCE



WWW.GLOBALTHESOURCE.COM • PHONE: 800.531.5967

PRODUCTS & BRANDS

- Air Conditioning Products
- Capacitors
- Definite Purpose Contactors
- Fuses
- Heating Products
- Line Sets
- Electrical Service Products
- Relays & Transformers
- Gas Ball Valves & Connectors
- Filter Driers & Sight Glasses
- Specialty Products & Tools



WEBSITES & SOCIAL MEDIA



www.GlobalTheSource.com
View our full catalog of products



Terms & Conditions



www.AmRadManufacturing.com
American made capacitors, view patents



CUSTOMER SERVICE

customerservice@globalthesource.com
Tel. 800.531.5967 • Fax. 800.336.6890

#Trust the

THE BEST HARD-START INSTALL



PROTECT THE AMERICAN WAY



CPT® Fuse Wire

Protection from Relay Failure
Within 3 Seconds

CPT®

Protection from run capacitor failure

AmRad hard-start kits and motor-run capacitors now come with built in safety features (CPT® Fuse Wire & CPT®) that cut the hard-start off from the system in the event of a part failure, protecting the compressor. Without these safety features, if the relay sticks or the motor-run capacitor fails, the compressor will run outside of its design parameters. This could potentially cause permanent compressor damage and/or complete failure.

CPT® Fuse Wire exclusively on

- AmRad Universal Hard-Start Kits (Up to 5 TONS)
 - TES5 (Internal Potential Relay)
 - TES5EXT (External Potential Relay)

CPT® exclusively on

- AmRad Universal Motor-Run Capacitors
 - Turbo 200®
 - Turbo 200®X
- AmRad USA Made Motor-Run Capacitors
 - Single Value (40+MFD)
 - Dual Value (All Values)



TURBO 200® SERIES



THE POWER OF UNIVERSAL

Eliminate the need to inventory more than 200 individual capacitors



Exclusive (G) Distributor

Turbo 200® with CPT®

- Run capacitor that replaces over 200 single or dual values up to 67.5 MFD

Turbo 200®X with CPT®

- Run capacitor that replaces any of the higher range single or dual capacitors used in scroll compressors and higher efficiency A/C units, values up to 97.5 MFD

Turbo 200® Mini and Mini-Oval

- Run capacitor for fan size values 2.5 MFD to 15 MFD



Turbo 200® Install Video



CPT® AI Video

CPT® (Compressor Protector Terminal®)



- Proprietary terminal that acts as a kill switch between the hard-start and compressor in the event of a failed run capacitor; preventing damage and possible compressor failure
- Pair it with the CPT® Fuse Wire on AmRad's universal hard-start kits for the best compressor protection
- See Page 3 for further details

FOR QUALITY PERFORMANCE AND YOUR SAFETY

These Turbo® capacitors have been tested and approved to the highest certification level of UL (Underwriters Laboratories) Standard 810; 10,000 AFC; Protected. (As required for all "original equipment" motor-run capacitors). These Turbo® capacitors are produced under one or more U.S. patents with additional U.S. and foreign patents pending.

Part Number	Value Range	Voltage Range	Case Qty
TURBO200	2.5 to 67.5 MFD	370/440 V	20
TURBO200X	5 to 97.5 MFD	370/440 V	20
TURBOMINI	2.5 to 15 MFD	370/440 V	50
TURBOMINIOVAL	2.5 to 15 MFD	370/440 V	50

TURBO EASY-START®



UNIVERSAL HARD-START KITS

Cover up to 5 Tons, with internal or external potential relay



Exclusive (G) Distributor

- Made in Palm Coast, FL, USA

- Filled with a thick non-PCB dielectric fluid to reduce heat
- Rust free all brass terminals
- 5 Year Warranty on TES5
- 3 Year Warranty on TES5EXT
- 2-wire universal, "low-loss" metallized motor-start capacitor



TES5EXT Install Video

CPT® Fuse Wire



- Ensures compressor protection within 3 seconds of a relay failure
- Pairs perfectly with the CPT® (Compressor Protector Terminal®) on AmRad's Turbo 200®, Turbo 200®X and USA Made Capacitors to protect your compressor in the event of a run capacitor failure
- See Page 3 for further details

Part Number	Potential Relay	Value Range	Voltage Range	Case Qty
TES5	Internal	Up to	Up to	20
TES5EXT	External	324 MFD	330 V	20

Turbo Easy-Start® 5 with CPT® Fuse Wire

- The built-in potential relay is completely enclosed and watertight; ideal for corrosive environments

Turbo Easy-Start® 5 with External Potential Relay and CPT® Fuse Wire

- Requested by contractors, the external relay makes for easy mounting in limited spaces

EASY TO FOLLOW
INSTALL INSTRUCTIONS
RIGHT ON THE CAN





Exclusive (G) Distributor

UNIVERSAL START CAPACITORS

Reduced inventory, increased convenience

- Made in Palm Coast, FL, USA
- Filled with a thick non-PCB dielectric fluid to reduce heat
- Rust free all brass terminals
- 5 Year Warranty
- UL approved safety interrupter
- Now a smaller size

Turbolytic® JR

- More compact start capacitor offers combined values up to 227 MFD
- 2.16" diameter x 4.2" tall

Turbolytic® 50

- Motor start capacitor can replace any of the most popular values up to 324 MFD
- 2.6" diameter x 4.2" tall

Part Number	Value Range	Voltage Range	Case Qty
TURBOLYTICJR	Up to 227 MFD	Up to 330 V	48
TURBOLYTIC50	Up to 324 MFD	Up to 330 V	36

FOR QUALITY PERFORMANCE AND YOUR SAFETY

These Turbo® capacitors have been tested and approved to the highest certification level of UL (Underwriters Laboratories) Standard 810; 10,000 AFC; Protected. (As required for all "original equipment" motor-run capacitors). These Turbo® capacitors are produced under one or more U.S. patents with additional U.S. and foreign patents pending.

Part Number	MFD	Part Number	MFD	Part Number	MFD				
110/125 V			220/250 V			330V			
1002	21-25	1038	21-25	1055	21-25	1020	300-360	1071	270-324
1003	25-30	1039	25-30	1056	25-30	1021	324-389	1072	324-389
1004	30-36	1040	30-36	1057	30-36	1022	340-408	1073	340-408
1005	36-43	1041	36-43	1058	36-43	1023	378-454	1074	378-454
1006	43-52	1042	43-52	1059	43-52	1024	430-516	1075	430-516
1007	53-64	1043	53-64	1060	53-64	1024A	440-480	1076	440-480
1007A	64-77	1043A	64-77	1060A	64-77	1025	460-552	1077	460-552
1008	72-86	1044	72-86	1061	72-86	1026	540-648	1078	540-648
1009	88-106	1045	88-106	1062	88-106	1027	590-708	1079	590-708
1010	108-130	1046	108-130	1063	108-130	1027A	645-774	1080	645-774
1011	124-149	1048	124-149	1065	124-149	1028	708-850	1080A	800-900
1012	130-156	1047	130-156	1064	130-156	1028A	800-900	1028AB	815-978
1013	145-174	1049	145-174	1066	145-174	1029	829-995	1030	1000-1200
1014	161-193	1050	161-193	1067	161-193				
1015	189-227	1051	189-227	1068	189-227				
1016	200-240	1052	216-259	1069	216-259				
1017	216-259	1053	233-280	1071	270-324				
1018	233-280	1053A	243-292						
1018A	243-292	1054	270-324						
1019	270-324	1054A	297-356						

These tables list the most popular motor-start capacitor on the market

The Turbolytic®50 covers over 75% of them!

"THE MORE YOU KNOW, THE LESS YOU HAVE TO CARRY"
- MORS KOCHANSKI



Exclusive (G) Distributor



UNMATCHED QUALITY

Backed by over 80 years of quality, reliability and durability

- Made in Palm Coast, FL, USA
- Filled with a thick non-PCB dielectric fluid to reduce heat
- Rust free all brass terminals
- 5 Year Warranty
- Individually tested and labeled with exact MFD ratings at completion of manufacturing
- Comes with the Compressor Protector Terminal (CPT®) on 40+MFD Single Value and all Dual Values
- UL/CSA Recognized
- OEM approved



AmRad Capacitor Video



CPT® (Compressor Protector Terminal®)



- Proprietary terminal that acts as a kill switch between the hard-start and compressor in the event of a failed run capacitor; preventing damage and possible compressor failure
- Pair it with the CPT® Fuse Wire on AmRad's universal hard-start kits for the best compressor protection
- See Page 3 for further details



CPT® 60 Sec. Video

Part Number	MFD	Can Dimensions* ~ Diameter x Height	Case Qty
SINGLE CAPACITANCE (OVAL CAN)			
USA2029	5	2" x 1.25" x 2"	100
USA2031	7.5	2" x 1.25" x 2"	100
USA2035	10	2" x 1.25" x 3"	100
SINGLE CAPACITANCE (ROUND CAN)			
USA2209	15	1.75" x 2.75"	100
USA2211	20	1.75" x 3.25"	100
USA2213	30	1.75" x 4.25"	100
USA2214	35	1.75" x 4.25"	100
USA2215	40	2.0" x 4.5"	50
USA2216	45	2.25" x 4.5"	50
USA2217	50	2.25" x 4.5"	50
USA2228	70	2.5" x 4.5"	50
USA2229	80	2.5" x 4.5"	25
DUAL CAPACITANCE (ROUND CAN)			
USA2226	30/5	2.0" x 4.5"	50
USA2227	35/5	2.0" x 4.5"	50
USA2235	40/5	2.25" x 4.5"	50
USA2232	40/7.5	2.25" x 4.5"	50
USA2236	45/5	2.25" x 4.5"	50
USA2233	45/7.5	2.5" x 4.5"	50
USA2237	50/5	2.5" x 4.5"	50
USA2238	50/7.5	2.5" x 4.5"	50
USA2240	55/5	2.5" x 4.5"	50
USA2220B	60/5	2.5" x 4.5"	50
USA2221	70/5	2.5" x 6.0"	25
USA2222BA	80/5	2.5" x 6.0"	25

More Sizes Available

UNIVERSAL CAPACITOR MOUNT

SAFE & SECURE

Mount any size run/start capacitors & place securely with our newest patented product!

- Made in the USA
- Easy to install
- Comes in a 2-pack
- Interlocks as one if needed
- Made with durable material
- Holds capacitor in place securely
- 2 screws and 2 zip ties included in pack



Part Number	Description	Case Qty
UCM	Universal Cap Mount- 2 pack	50

*Must purchase in full case Qty.

NEW PRODUCT!

HVAC SURGE PROTECTION



Demonstration video

- Made in the USA
- 10 year warranty
- Durable and cost effective
- Protects HVAC condensing units, furnaces, air handlers, heat pumps, motors and ductless air conditioners

FIRST LINE OF DEFENSE

Prevent equipment loss from power outages, surges, and voltage transients

Part Number	Description	Case Qty
DTK-120/240CM+	120/240V Single Phase Surge Protection	12
DTK-1LVLPLV	1 Pair, 30V, 16-22SWG Terminal Strip	12
DTK-4LVLPLV	4 Pair, 8-Wire 24V Surge Protection	12
DTK-2403CMXPLUS	240V 3 Phase Secondary Surge Arrester	9
DTK-4803CMXPLUS	480V 3 Phase Arrester w/ LED Diagnostics	9
DKT-KG2	Kool Guard Series Intelligent Voltage Monitoring	10

DTK-120/240CM+

- NEMA 4X weatherproof enclosure allows for use in harsh environments
- Parallel connection for easy installation
- Diagnostic LED provides positive indication of power, ground presence, and surge protection
- Automatically resets to handle multiple surge events
- Protects HVAC condensing units, furnaces, air handlers, heat pumps, motors and ductless air conditioners installed and wired to the load side of the disconnect
- UL Listed
- 3 Year \$7,500 residential connected equipment manufacturer warranty

Kool Guard 2

- Standard UL Type 4X polycarbonate enclosure allows the unit to be easily installed in harsh outdoor environments
- Protection for under-voltage & over-voltage events
- Safely disconnects power to the system with adjustable time delay (30 seconds-3 minutes) before reconnecting after a voltage issue.
- Diagnostic red and green LEDs indicate exactly what voltage condition is present
- Surge protection components included to divert harmful transient voltages away from the equipment
- Applications:
 - Ductless AC Systems (Mini-splits)
 - Inverter-type Compressor Systems
 - Split Systems
 - Goes up to 40A



MATERIAL MATTERS

Abrasion and weather resistant polymeric jacket, providing the best protection in the industry

- Made and assembled in the USA
- Copper Tube UL Recognized to 700 PSI MWP
- 10-year limited manufacturing warranty on copper tube
- R410A Engineered and Tested
- ASTM B1003

Duraguard UV™ Insulation

- Operating Temperature Range: -70°F to +220°F (ASTM C534)
- Insulating properties of elastomeric foam
- 5-year limited manufacturer warranty on insulation including UV Resistance
- Compliances: ASTM E 84 25/50, 2012/2015 IECC (Res. + Comm.), ASTM G153, UL 94 (fire stop), and CA Title 24, Section 120.3



CURRENTLY AVAILABLE 1/2" DURAGUARD UV INSULATION WITH STRAIGHT ENDS				
Part Number	Liquid Line	Suction Line	Length	Pallet Qty
SUCTION LINE ONLY				
00420500C	-	1/4"	50'	12
00620500C	-	3/8"	50'	8
00820500C	-	1/2"	50'	7
MINI SPLIT				
40620250B6C	1/4"	3/8"	25'	12
40620500B6C	1/4"	3/8"	50'	8
40820250B6C	1/4"	1/2"	25'	12
40820500B6C	1/4"	1/2"	50'	7
41020250B6C	1/4"	5/8"	25'	8
41020500B6C	1/4"	5/8"	50'	7
61020250B6C	3/8"	5/8"	25'	8
61020500B6C	3/8"	5/8"	50'	7
61220250B6C	3/8"	3/4"	25'	8
61220500B6C	3/8"	3/4"	50'	5

"R" Value for 1/2" insulation = R3

Other sizes available upon request, call for details!

WHY CHOOSE STREAMLINE® DURAGUARD UV™ LINE SETS?	Duraguard UV™	Polyethylene (PE)
Elastomeric Rubber Insulation	✓	✗
Sunlight (UV) Resistant	✓	✗
Mechanical Abuse Resistant	✓	✗
Insulation Warranty	✓	✗
Fire Stop Compliant (UL94)	✓	✗
CA Title 24 Compliant	✓	✗

Comparison based on Streamline® line set products

Exclusive Distributor

Drain Alert®

- No gluing or cutting existing drain lines
- Built for primary and auxiliary drain pan outlets, on plastic or metal drain pans
- Pre-wired 18 - 72" lead
- Compact enough to fit in vertical and horizontal applications
- Designed & engineered to be compatible with all makes/models of air handlers
- Vertical deep well rotating head for a secure mount
- Sensor comes with a 1/2" opening and no extra washer is needed to avoid premature cut off
- Plenum wire model available for commercial building code requirements, with a 60" lead

Quick Clip

- Designed to clip onto the side of metal auxiliary drain pans
- Designed to work in conjunction with water only
- Pre-wired 18 - 48" lead
- For use in metal drain pans only
- Encased in the same superior packaging as Drain Alert

THE CLEAR CHOICE

A translucent float-switch shut-off that installs with no need for cutting or gluing

- Made in the USA
- Translucent body allows for a quick visual inspection of water presence
- Made of durable impact resistant material
- Can be used on all 24 V systems
- 2 year warranty
- When the float rises, the circuit will break open and the system will shut down

Global Part Number	Cross Reference (RectorSeal)	Description	Case Qty
DRAIN ALERT	SS2	Condensate Float Switch	48
DRAIN ALERT PL	SS2AP	Condensate Float Switch Plenum Wire	48
QUICKCLIP	SS3	Remote Safety Switch Control	48

HVAC EQUIPMENT HANGER



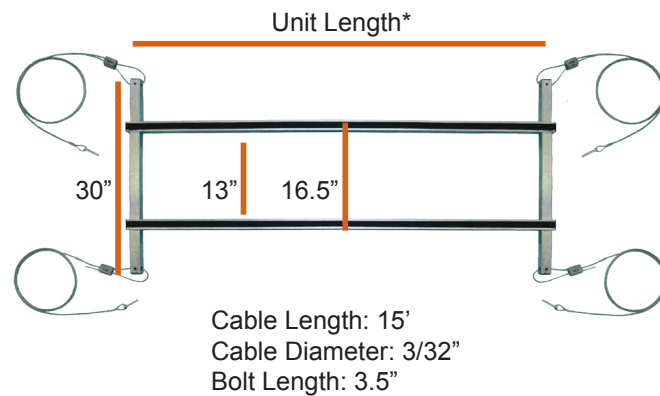
GET IT UP, FAST & EASY

Installs in as little as 15 minutes

Exclusive (G) Distributor

Hung-Rite

- Made in USA
- Supports up to a 5 ton air handler or furnace & coil weighing up to 400 lbs
- UL Listed
- Hanger comes fully assembled and ready for installation
- Cable locks allow easy leveling of your equipment
- Hanger is collapsible, and easy to take anywhere
- Uses padding to reduce vibration, for quieter equipment operation
- HVAC contractor designed
- Has separate holes drilled for threaded-rod installations
- Equipped with 3 1/2" bolts
- Gives proper support to eliminate equipment buckling
- Leaves equipment unobstructed for future maintenance
- California hanging advisements of installing/hanging cables at a 45-Degree angle to minimize sway in case of an earthquake



Part Number	*Unit Length	Pallet Qty	Min. Order Qty
HUNG-RITE	66"	48	8
HUNG-R33	33"	48	8
HUNG-R56	56"	48	8
HUNG-R78	78"	48	20



Hung-Rite Video

A/C WIRING KITS



EASY INSTALLATION

For air conditioners, outdoor lighting, spas, hot tubs and more

240 Volt, Single Phase A/C SEALPROOF® Power Whip

- Made in the USA
- Designed for easy installation
- Resists corrosion, oil, and water
- Outdoor, sunlight resistant
- Time saving convenience
- Individually bagged
- Whip – Assembled with all UL Components
- Available in 1/2 inch and 3/4 inch conduit size
- 4 foot and 6 foot lengths
- THHN Wire
 - Approved for up to 600V
 - Max Temperature Rating: 90°C (dry) 75°C (wet)
 - Copper Wire
 - RoHS Compliant

Part Number	Size	Fitting	Wire Size	Case Qty
NON-METALLIC				
8071	1/2" x 4'	1-Straight-1-90°	#10THHN	40
8073	1/2" x 6'	1-Straight-1-90°	#10THHN	30
8075	3/4" x 4'	1-Straight-1-90°	#8THHN	30
8077	3/4" x 6'	1-Straight-1-90°	#8THHN	24
METALLIC				
8071M	1/2" x 4'	1-Straight-1-90°	#10THHN	40
8073M	1/2" x 6'	1-Straight-1-90°	#10THHN	30
8075M	3/4" x 4'	1-Straight-1-90°	#8THHN	30
8077M	3/4" x 6'	1-Straight-1-90°	#8THHN	24

GLOBAL PULLOUTS

UPGRADED DESIGN

Fused & Non-Fused 30 AMPS & 60 AMPS Air Conditioner Pull-Out Disconnects

- Easy to Install
- Durable Material - Made with high quality materials Powder Coated Galvanized Steel enclosure is NEMA 3R rated, ANSI certified and UL listed.
- Convenient Knockouts - 6 multi-size knockouts on 4 sides in 1/2" 3/4" & 1" trade sizes.
- Padlockable Door - For safety and security, enclosure can be locked with pullout stored inside in the off position
- The pullout has solid copper connectors.
- Non-Fusible Pullout 60 AMPS, 120/240 Volts
- Fusible Pullout 30 AMPS & 60 AMPS, 120/240 Volts
- cULus Listed



Part Number	Enclosure Material	Phase	Main Amp Rating	Case Qty
FUSIBLE, PULLOUT				
G8062	Galvanized Steel	1	30A	10
G8063	Galvanized Steel	1	60A	10
NON-FUSIBLE, PULLOUT				
G8064	Galvanized Steel	1	60A	10

DISCONNECTS AND PULLOUTS

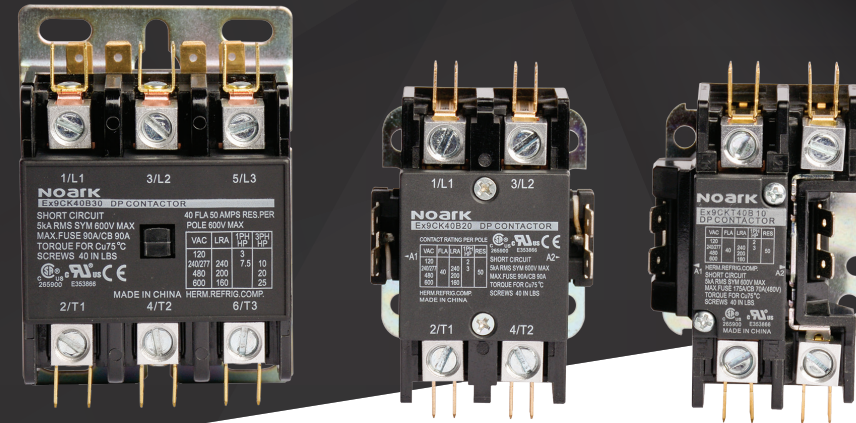
- Manufactured by Eaton
- Switch and pullout models
- Galvanized steel or durable non-metal
- Copper-rated line and load lugs that are easily accessible
- Ample wiring space for mounting with a stud gun
- 1/2", 3/4" and 1" knockouts on the bottom, back and side of unit
- Easy-to-remove protective front cover for easier wiring and mounting (no screws or fasteners to remove)



Part Number	Enclosure Material	Phase	Main Amp Rating	Case Qty
NON-FUSIBLE MOLDED CASE SWITCH DISCONNECT				
8068	Galvanized Steel	1	60A	10
80643P	Galvanized Steel	3	60A	5
FUSIBLE, PULLOUT WITH GFI*				
8062GFI	Galvanized Steel	1	30A	10
FUSIBLE, PULLOUT				
8062	Galvanized Steel	1	30A	10
8063	Galvanized Steel	1	60A	10
8062NM	Non-Metallic	1	30A	10
8063NM	Non-Metallic	1	60A	10
NON-FUSIBLE, PULLOUT				
8064	Galvanized Steel	1	60A	5
8064NM	Non-Metallic	1	60A	10
8064P**	Non-Metallic	1	60A	5

*GFI Receptacle is 15A, 120VAC
**Side Door Model

NEW SMALLER SIZE



Exclusive Distributor

5 YEAR WARRANTY

- Rated current from 20 - 75 A
- Enclosed coil standard for all 3 pole frame sizes
- Industry standard mounting plate provides easily accessible mounting holes
- Coil is Class B 266°F (130°C) insulation system with a wide range of voltages
- 50/60Hz ratings for 2 & 3 pole configurations
- Double E magnet assembly provides optimal performance with reduced power consumption
- 1NO+1NC auxiliary contact block with 600 V rating is an available option on 3 pole contactors
- Meets requirements for A2L refrigerants

NOARK – COMPARISON CHART					
FEATURE	NOARK	JARD	MARS	PACKARD	TITAN MAX
Box Lugs	✓	✓	✓	✓	✓
Enclosed Body	✓		✓	✓	✓
Copper & Brass Terminals	✓		✓	✓	✓
Silver Cadmium Contacts	✓		✓	✓	✓
ARI 780/790	✓		✓		✓
Aux Switches Available	✓	✓	✓	✓	✓
1,000,000 Cycle Mech. Life	✓		✓		✓
Polyester Base Assembly	✓	✓			
5 Year Warranty	✓				

CONTACTORS



A BETTER CONTACTOR

High arc resistant polyester base assembly and lugs on every size

- UL 508 Recognized, File No. E353866
- CSA Certified, C22.2 No. 265900
- IEC/EN 60947 Compliant
- CE Approved
- Compliance to ARI-780 HVAC Standards
- RoHS Compliant

Part Number	Voltage	Amperage	Case Qty
1 POLE WITH SHUNT			
N4143	24 V	30 A	64
N4164	24 V	40 A	64
2 POLE			
N4101	24 V	20 A	64
N4104	24 V	25 A	64
N4107	24 V	30 A	64
N4161	24 V	40 A	64
N4102	120 V	20 A	64
N4105	120 V	25 A	64
N4108	120 V	30 A	64
N4162	120 V	40 A	64
N4106	208/240 V	25 A	64
N4109	208/240 V	30 A	64
N4163	208/240 V	40 A	64
3 POLE			
N4113	24 V	30 A	54
N4116	24 V	40 A	54
N4128	24 V	50 A	27
N4114	120 V	30 A	54
N4117	120 V	40 A	54
N4129	120 V	50 A	27
N4135	120 V	75 A	12
N4115	208/240 V	30 A	54
N4118	208/240 V	40 A	54
N4130	240 V	50 A	27
N4133	240 V	60 A	27
N4136	240 V	75 A	12

FILTER DRIERS



SOLID CORE DESIGN

High retention filter for removal of particulate as small as 25 microns

Call to request ANY Mueller-Filter Drier

- Design Pressure (DP) / Maximum abnormal pressure (MAP): 700 psig
- Maximum working temperature: 160°F/70°C
- Compatible with all CFC, HCFC, HFC and HFO refrigerants and oils, and refrigerants requiring XH-11 desiccant
- UL/cUL Listed, Conforms to Pressure Equipment Directive 2014/68/EU
- High pressure shell and connections
- Powder paint finish approved for marine applications
- 100% copper connection for solder models



Part Number	Cubic Inches	Connection Size	Overall Length x Diameter	Case Qty
SUCTION LINE SOLDER CONNECTION				
FDS-166-TT	16	3/4"	6.69" x 3.12"	16
FDS-167-TT	16	7/8"	6.77" x 3.12"	16
FDS-169-TT	16	1 1/8"	6.81" x 3.11"	16
FDS-306-TT	30	3/4"	9.70" x 3.11"	10
FDS-307-TT	30	7/8"	9.78" x 3.11"	10
FDS-309-TT	30	1 1/8"	9.81" x 3.11"	10
FDS-4111-TT	41	1 3/8"	10.27" x 3.65"	10

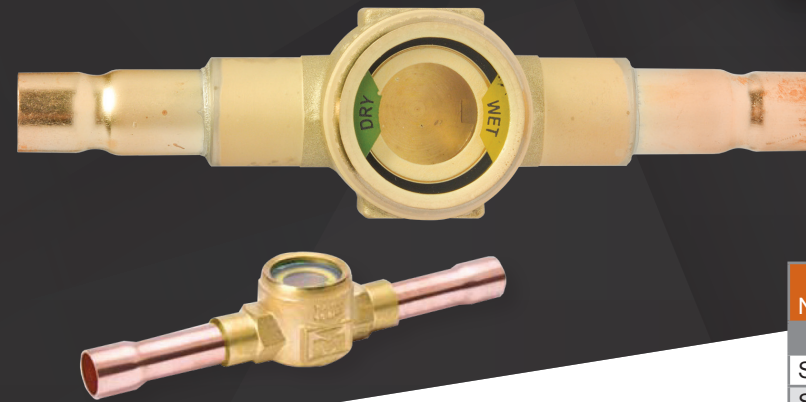


LIQUID LINE FILTER DRIERS				
Part Number	Cubic Inches	Connection Size	Overall Length x Diameter	Case Qty
SOLDER CONNECTION				
SD-032	3	1/4"	4.03" x 1.85"	25
SD-052	5	1/4"	4.40" x 2.32"	25
SD-053	5	3/8"	4.40" x 2.32"	25
SD-083	8	3/8"	5.43" x 2.32"	25
SD-163	16	3/8"	5.79" x 3.12"	16
SD-164	16	1/2"	6.06" x 3.12"	16
SD-165	16	5/8"	6.22" x 3.12"	16
SD-166	16	3/4"	6.69" x 3.12"	16
SD-167	16	7/8"	6.77" x 3.12"	16
SD-303	30	3/8"	8.79" x 3.15"	10
SD-305	30	5/8"	9.22" x 3.15"	10
SD-306	30	3/4"	9.70" x 3.15"	10
SD-307	30	7/8"	9.78" x 3.15"	10
SD-309	30	1 1/8"	9.81" x 3.15"	10
FLARE CONNECTION				
FL-032	3	1/4"	4.29" x 1.85"	25
FL-052	5	1/4"	4.66" x 2.32"	25
FL-053	5	3/8"	5.18" x 2.32"	25
FL-083	8	3/8"	6.22" x 2.32"	25
FL-163	16	3/8"	6.57" x 3.12"	16
FL-164	16	1/2"	6.89" x 3.12"	16
FL-165	16	5/8"	7.25" x 3.12"	16
FL-303	30	3/8"	9.57" x 3.15"	10



HEAT PUMP FILTER DRIERS				
Part Number	Cubic Inches	Connection Size	Overall Length x Diameter	Case Qty
SOLDER CONNECTION				
HPS-083	8	3/8"	5.31" x 2.65"	25
HPS-084	8	1/2"	5.59" x 2.65"	25
HPS-163	16	3/8"	5.87" x 3.15"	16
HPS-164	16	1/2"	6.14" x 3.15"	16
HPS-165	16	5/8"	6.30" x 3.15"	16
HPS-304	30	1/2"	9.13" x 3.15"	16
HPS-305	30	5/8"	9.29" x 3.15"	16
HPS-307	30	7/8"	9.84" x 3.15"	16
FLARE CONNECTION				
HPF-083	8	3/8"	6.09" x 2.65"	25
HPF-084	8	1/2"	6.41" x 2.65"	25
HPF-163	16	3/8"	6.65" x 3.15"	16
HPF-164	16	1/2"	6.97" x 3.15"	16
HPF-165	16	5/8"	7.33" x 3.15"	16
HPF-304	30	1/2"	9.96" x 3.15"	16
HPF-305	30	5/8"	10.32" x 3.15"	16

SIGHT GLASSES



- Provides accurate identification of system conditions
- Continuous operating temperature (COT): -40°F/185°F, -40°C/85°C
- Contact factory or visit website for compatibility with CFC, HCFC, HFC and HFO refrigerants and oils
- UL/cUL Recognized, Conforms to Pressure Equipment Directive 2014/68/EU
- Designed for maximum flow and minimum pressure drop with large viewing window and indicator for better visibility

Part Number	Connection Size	Length x Height	MAP psig bar	Case Qty
SOLDER X SOLDER EXTENDED TUBE				
SGS-02	1/4"	5.06" x .097"	775	53 56
SGS-03	3/8"	4.85" x .097"	775	53 56
SGS-04	1/2"	5.75" x 1.19"	775	53 56
SGS-05	5/8"	5.75" x 1.19"	775	53 56
SGS-06	3/4"	6.71" x 1.49"	775	53 48
SGS-07	7/8"	6.71" x 1.49"	775	53 48
M X F FLARE				
SG-02	1/4" x 7/16"-20 UNF	2.45" x 1.06"	700	48 56
SG-03	3/8" x 5/8"-18 UNF	3.00" x 1.30"	700	48 56
SG-04	1/2" x 3/4"-16 UNF	2.85" x 1.30"	700	48 56

GAS BALL VALVES & CONNECTORS

Gas Ball Valves

- 175 PSI
- 1/2 PSIG and 5G Certified
- -20°F to 300°F temperature range
- Forged brass, two piece body, lever handle
- Quarter turn lever handle for positive on/off operation
- Coated aluminum handle for corrosion & solvent resistance
- Multi-directional flow
- Chrome plated brass ball



GAS BALL VALVES			
Part Number	Size	Connection	Case Qty
110-222	3/8"	FIP x FIP	10
110-223C	1/2"	FIP x FIP	10
110-223R	1/2" - Red H	FIP x FIP	10
110-224C	3/4"	FIP x FIP	10
110-225	1"	FIP x FIP	6

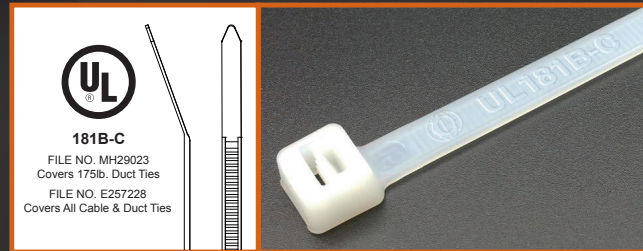
Gas Connectors

- -40°F to 150°F operating temperature
- Zinc-plated steel S45C Fittings
- Coated connectors have yellow epoxy coating for extra safe-guard protection from common wear & tear



GAS CONNECTORS		
Part Number	Description (1/2 ID, 1/2M x 1/2M)	Case Qty
G012SS101024	24" - Stainless Steel	25
G012SS101036	36" - Stainless Steel	25
G012SS101048	48" - Stainless Steel	25
G012YE101024	24" - Yellow Coated	25
G012YE101036	36" - Yellow Coated	25
G012YE101048	48" - Yellow Coated	25

DUCT TIES



A TRUSTED NAME IN DUCT TIES

All ties feature a bent tip design for a smooth insertion in hard-to-reach places

- Rounded tips prevent users from cutting themselves on sharp edges.
- UV black cable and duct ties are specially manufactured to resist the sun's harmful UV rays.
- Minimum Installation Temperature: 5°F (-15°C)
- 175 lb. Duct Ties investigated to ANSI/UL 181B
 - UL 2043: "Fire Test for Heat and Visible Smoke Release for Discrete Products and Their Accessories Installed in Air-Handling Spaces."
 - These products have been found to be suitable for use in plenums in accordance with the "International Mechanical Code," "Uniform Mechanical Code," and ANSI/NFPA 90A, "Installation of Air-Conditioning and Ventilating Systems".UL Listed, Std. 248-14, Guide JDYX, File E19180

Part Number	Max. Tensile Strength	Length	Color	Case Qty
(100 PACK) CABLE TIES				
CT6-40C0W	40 lb.	6"	UV Black	250
CT8-50C0W	50 lb.	8"	UV Black	100
CT8-50C9	50 lb.	8"	Natural	100
CT11-50C0W	50 lb.	11"	UV Black	50
CT11-50C9	50 lb.	11"	Natural	50
CT14-50C0W	50 lb.	14.5"	UV Black	50
CT17-50C9	50 lb.	17"	Natural	50
(50 PACK) DUCT TIES				
CT24-175K0W	175 lb.	24.5"	UV Black	10
CT24-175K9	175 lb.	24.5"	Natural	10
CT36-175K0W-B	175 lb.	36"	UV Black	10
CT36-175K9-B	175 lb.	36"	Natural	10
CT48-175K0W-B	175 lb.	48"	UV Black	10
CT48-175K9-B	175 lb.	48"	Natural	10

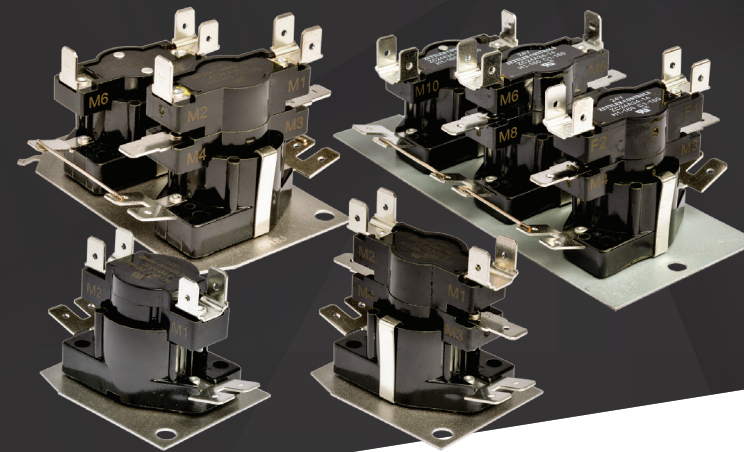
POWER SUPPLY CORDS

- Suitable as a replacement power cord for air conditioners, refrigerators, freezers, microwaves and more.
- Exposed copper wire tips are tin coated
 - Maintains electrical performance by keeping the copper wire from oxidizing and increases safety by reducing cross connections and electrical exposure to installer
- 13 A / 125 V / 1625 W
- 16 Gauge, 3 Conductor SPT-3 Wire
- ETL Listed (3170291)
- Meets NEMA 5-15P standards



TIN-TIPPED COPPER WIRE

Part Number	Description	Case Qty
8065	6' Pigtail, 125V, 90° Plug, 16 Gauge	100
8065S	6' Pigtail, 125V, Straight Plug, 16 Gauge	40



ZC24A34 Series

- Positive temperature coefficient (PTC) heater element:
 - Provides voltage compensation over a wide voltage range without danger of overheating at high voltage
 - Has a unique feature of always stabilizing temperature, regardless of ambient temperature or voltage range
- Self current limiting, and assures device actuation under low voltage conditions
- Solid state PTC
- Shock and vibration resistant
- Mounts in any position
- Full-load rated auxiliary contacts
- Standard operating ambience between - 50° F (-45.5° C) and 165° F (73.8° C)
- Custom timings available
- UL File E237660, UL873; CSA approved
- Quick connect terminals

Part Number	Cross Reference	Case Qty
24ZC-1	33241, 24A34-1, Q101	160
24ZC-2	33242, 24A34-2, Q102	160
24ZC-3	33244, 24A34-3, Q103	160
24ZC-4	33245, 24A34-4, Q104	160
24ZC-5	33232, 24A34-5, Q105	80
24ZC-6	33233, 24A34-6, Q106	80
24ZC-14	24A34-14	48



- Quality restrings for electric strip heater repair.
- Coils fit ceramic insulators with 3/8" inside diameter openings.

Part Number	Cross Reference	Case Qty
5005	5000W @ 240V, 3750W @ 208V, 28" w/ Fuse	10
5005NF	5000W @ 240V, w/o Fuse	10

HEAT RESTRING KITS





WE BELIEVE IN SUPPORTING AMERICA,
AMERICAN MANUFACTURING & THE AMERICAN WORKER

#Trust the 